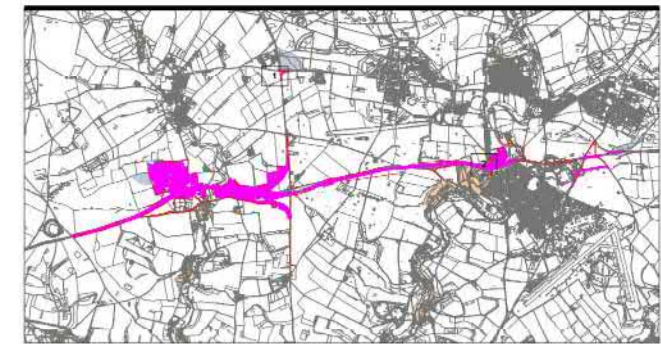


NOTES

- TREE CATEGORIES AS DEFINED BY BS 5837:2012
- TREE LOCATIONS ARE BASED ON BLUESKY NATIONAL TREE MAP DATA AND SITE WALKOVER.
- PLANS SHOULD BE READ IN CONJUNCTION WITH THE AECOM ARBORICULTURAL REPORT.
- THE ORIGINAL OF THIS DRAWING WAS PRODUCED IN COLOUR - A MONOCHROME COPY SHOULD NOT BE RELIED UPON.
- © Crown copyright and database rights 2018 Ordnance Survey 100030649.

KEY PLAN

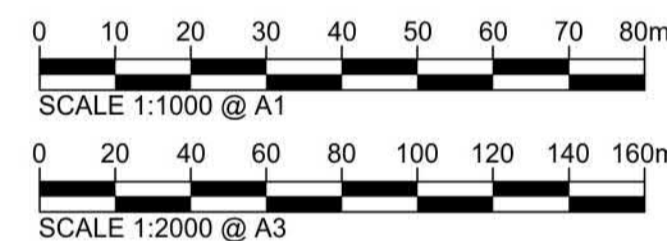
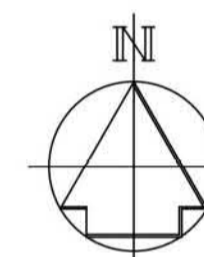


REFER TO DETAILED KEY PLAN FOR MORE INFORMATION

KEY

- RETAINED TREES & GROUPS
- TREES & GROUPS REQUIRING REMOVAL TO FACILITATE THE WORKS
- RED LINE PLANNING BOUNDARY
- PROPOSED LAYOUT (SHOWN IN PINK)
- TREE PRESERVATION ORDER
- CONSERVATION AREA
- SSSI

© Crown copyright and database rights 2017 Ordnance Survey 100030649
 Contains Environment Agency information © Environment Agency and/or database rights 2015.
 © Wiltshire Council October 2017. Data reproduced with permission from Wiltshire Council Archaeology Service



Revision Details	By	Date	Suffix

Purpose of issue: **FINAL**

Client:

Project Title: **A303 STONEHENGE
 AMESBURY TO BERWICK DOWN**

Drawing Title: **APPENDIX 10 / FIGURE 7A
 TREES TO BE REMOVED OR IMPACTED WHICH ARE
 PROTECTED BY A STATUARY DESIGNATION
 (OVERVIEW)**

Designed N/A	Drawn CC	Checked AW	Approved AK	Date 14-05-19
Internal Project No. 60547200	Subsidiarity N/A		Zone SW	
Scale @ A1 NTS				

THIS DOCUMENT HAS BEEN PREPARED PURSUANT TO AND SUBJECT TO THE TERMS OF AMW'S APPOINTMENT BY ITS CLIENT. AMW ACCEPTS NO LIABILITY FOR ANY USE OF THIS DOCUMENT OTHER THAN BY ITS ORIGINAL CLIENT OR FOLLOWING AMW'S EXPRESS AGREEMENT TO SUCH USE, AND ONLY FOR THE PURPOSES FOR WHICH IT WAS PREPARED AND PROVIDED.

Highways England
 Temple Quay House
 2 Temple Quay
 Bristol
 BS1 6PN

AECOM + mac + WSP

Drawing Number HE551506	1 Originator AMW	1 Volume GEN	Rev 01
SCHEME WIDE	DR	LA 103	
Location	1 Type	1 Role	1 Number

Tree Survey Schedule - Trees to be Removed or Impacted which are Protected by a Statutory Designation

Tree ID	Species	Estimated height (m)	Stem Diameter (mm)	Canopy Spread (N)	Canopy Spread (S)	Canopy Spread (E)	Canopy Spread (W)	First Significant Branch (m)	Canopy Clearance (m)	Physiological Condition	Life Stage	Structural Condition	Condition Comments	Statutory Designation	Comments	Works to be Proposed in Proposed Scheme	Estimated Remaining Commission	Category
G296	Hawthorn (Crataegus monogyna), Blackthorn (Prunus spinosa), Apple (Malus sp)	4	150	2	2	2	2	n/a	n/a	Good - Fair	SM-M	Good - Fair		Site of Special Scientific Interest		Fell	20+	C2
G676	Sycamore (Acer pseudoplatanus), Ash (Fraxinus excelsior), Hawthorn (Crataegus monogyna)	7	150	3	3	3	3	n/a	n/a	Good - Fair	SM-EM	Good - Fair		Within or very close to a Conservation Area		Fell	20+	C2
G677	Crack Willow (Salix fragilis), Sycamore (Acer pseudoplatanus)	5	100	2	2	2	2	n/a	n/a	Fair	SM	Fair	Multitemmed	Within or very close to a Conservation Area		Fell	20+	C2
G678	Hawthorn (Crataegus monogyna)	5	100	2	2	2	2	n/a	n/a	Fair	SM	Fair		Within or very close to a Conservation Area		Fell	10+	C2
T679	Ash (Fraxinus excelsior)	16	350	4	4	4	4	4.0N	4	Good	EM	Poor	Compression fork	Within or very close to a Conservation Area		Fell	10+	C2
G681	Crack Willow (Salix fragilis), Ash (Fraxinus excelsior), Hawthorn (Crataegus monogyna)	12	300	3	3	3	3	n/a	n/a	Good - Poor	EM-M	Good - Poor		Within or very close to a Conservation Area		Fell part of group as per Tree Removals Plan	20+	B2,3
T682	Hawthorn (Crataegus monogyna)	5	150	2	2	2	2	1.0N	1	Good	EM	Fair		Within or very close to a Conservation Area		Fell	10+	C2
T683	Hawthorn (Crataegus monogyna)	5	120	1	1	1	1	1.0N	1	Good	EM	Fair		Within or very close to a Conservation Area		Fell	10+	C2
T684	Ash (Fraxinus excelsior)	16	350	3	3	3	3	4.0N	4	Good	EM	Fair		Within or very close to a Conservation Area		Fell	20+	C2
T685	Ash (Fraxinus excelsior)	16	400	3	3	3	3	4.0N	4	Good	EM	Good		Within or very close to a Conservation Area		Fell	20+	B2
G696	Ash (Fraxinus excelsior), Willow (Salix sp)	14	300	3	3	3	3	n/a	n/a	Good	SM-M	Fair		Within or very close to a Conservation Area		Fell part of group as per Tree Removals Plan	20+	C2,3
T687	Common Oak (Quercus robur)	16	400	3	3	3	3	4.0N	4	Good	EM	Good		Within or very close to a Conservation Area		Fell	20+	B2
T690	Hawthorn (Crataegus monogyna)	6	150	2	2	2	2	2.0N	2	Fair	SM	Fair		Within or very close to a Conservation Area		Fell	10+	C2
G691	Common Alder (Alnus glutinosa)	15	400	4	4	4	4	n/a	n/a	Good	M	Good		Within or very close to a Conservation Area		Fell part of group as per Tree Removals Plan	20+	B2
T692	Ash (Fraxinus excelsior)	6	160	2	2	2	2	2.0N	2	Fair	SM	Fair		Within or very close to a Conservation Area		Fell	10+	C2
T693	Ash (Fraxinus excelsior)	6	240	3	3	3	3	2.0N	2	Fair	EM	Fair		Within or very close to a Conservation Area		Fell	10+	C2
T695	Willow (Salix sp)	6	240	2	2	2	2	2.0N	2	Fair	EM	Fair		Within or very close to a Conservation Area		Fell	10+	C2
T699	Ash (Fraxinus excelsior)	8	210	2	1	2	2	3.0N	3	Fair	EM	Fair	Ivy	Within or very close to a Conservation Area		Fell	20+	C2
T701	Ash (Fraxinus excelsior)	16	370	3	3	3	3	4.0N	6	Fair	EM	Fair	Ivy	Within or very close to a Conservation Area		Fell	20+	C2
T705	Ash (Fraxinus excelsior)	14	370	3	3	3	3	6.0N	6	Good	EM	Good		Within or very close to a Conservation Area		Fell	20+	C2
T708	Ash (Fraxinus excelsior)	16	510	5	5	5	5	7.0N	6	Good	M	Good		Within or very close to a Conservation Area		Fell	20+	B2
G709	Ash (Fraxinus excelsior), Hawthorn (Crataegus monogyna)	8	150	2	2	2	2	n/a	n/a	Fair	Y-SM	Fair		Within or very close to a Conservation Area		Fell	20+	C2
G721	Hawthorn (Crataegus monogyna), Ash (Fraxinus excelsior), Sycamore (Acer pseudoplatanus)	8	150	2	2	2	2	n/a	n/a	Good - Fair	Y-SM	Good - Fair		Within or very close to a Conservation Area		Fell part of group as per Tree Removals Plan	20+	C2



NOTES

- TREE CATEGORIES AS DEFINED BY BS 5837:2012
- TREE LOCATIONS ARE BASED ON BLUESKY NATIONAL TREE MAP DATA AND SITE WALKOVER.
- PLANS SHOULD BE READ IN CONJUNCTION WITH THE AECOM ARBORICULTURAL REPORT.
- THE ORIGINAL OF THIS DRAWING WAS PRODUCED IN COLOUR - A MONOCHROME COPY SHOULD NOT BE RELIED UPON.
- © Crown copyright and database rights 2018 Ordnance Survey 100030649.

KEY PLAN



REFER TO DETAILED KEY PLAN FOR MORE INFORMATION

KEY

- RETAINED TREES & GROUPS
- TREES & GROUPS REQUIRING REMOVAL TO FACILITATE THE WORKS
- RED LINE PLANNING BOUNDARY
- PROPOSED LAYOUT (SHOWN IN PINK)
- TREE PRESERVATION ORDER
- CONSERVATION AREA
- SSSI

© Crown copyright and database rights 2017 Ordnance Survey 100030649
Contains Environment Agency information © Environment Agency and/or database rights 2015.
© Wiltshire Council October 2017. Data reproduced with permission from Wiltshire Council Archaeology Service

0 10 20 30 40 50 60 70 80m
SCALE 1:1000 @ A1

0 20 40 60 80 100 120 140 160m
SCALE 1:2000 @ A3

Revision Details	By	Date	Suffix

Purpose of issue: **FINAL**

Client: **highways england**

Project Title: **A303 STONEHENGE AMESBURY TO BERWICK DOWN**

Drawing Title: **APPENDIX 10 / FIGURE 7A TREES TO BE REMOVED OR IMPACTED WHICH ARE PROTECTED BY A STATUTORY DESIGNATION (SHEET 1)**

Designed N/A	Drawn CC	Checked AW	Approved AK	Date 14-05-19
Internal Project No. 60547200	Suitability N/A		Zone SW	

THIS DOCUMENT HAS BEEN PREPARED PURSUANT TO AND SUBJECT TO THE TERMS OF AmW'S APPOINTMENT BY ITS CLIENT. AmW ACCEPTS NO LIABILITY FOR ANY USE OF THIS DOCUMENT OTHER THAN BY ITS ORIGINAL CLIENT OR FOLLOWING AmW'S EXPRESS AGREEMENT TO SUCH USE, AND ONLY FOR THE PURPOSES FOR WHICH IT WAS PREPARED AND PROVIDED.

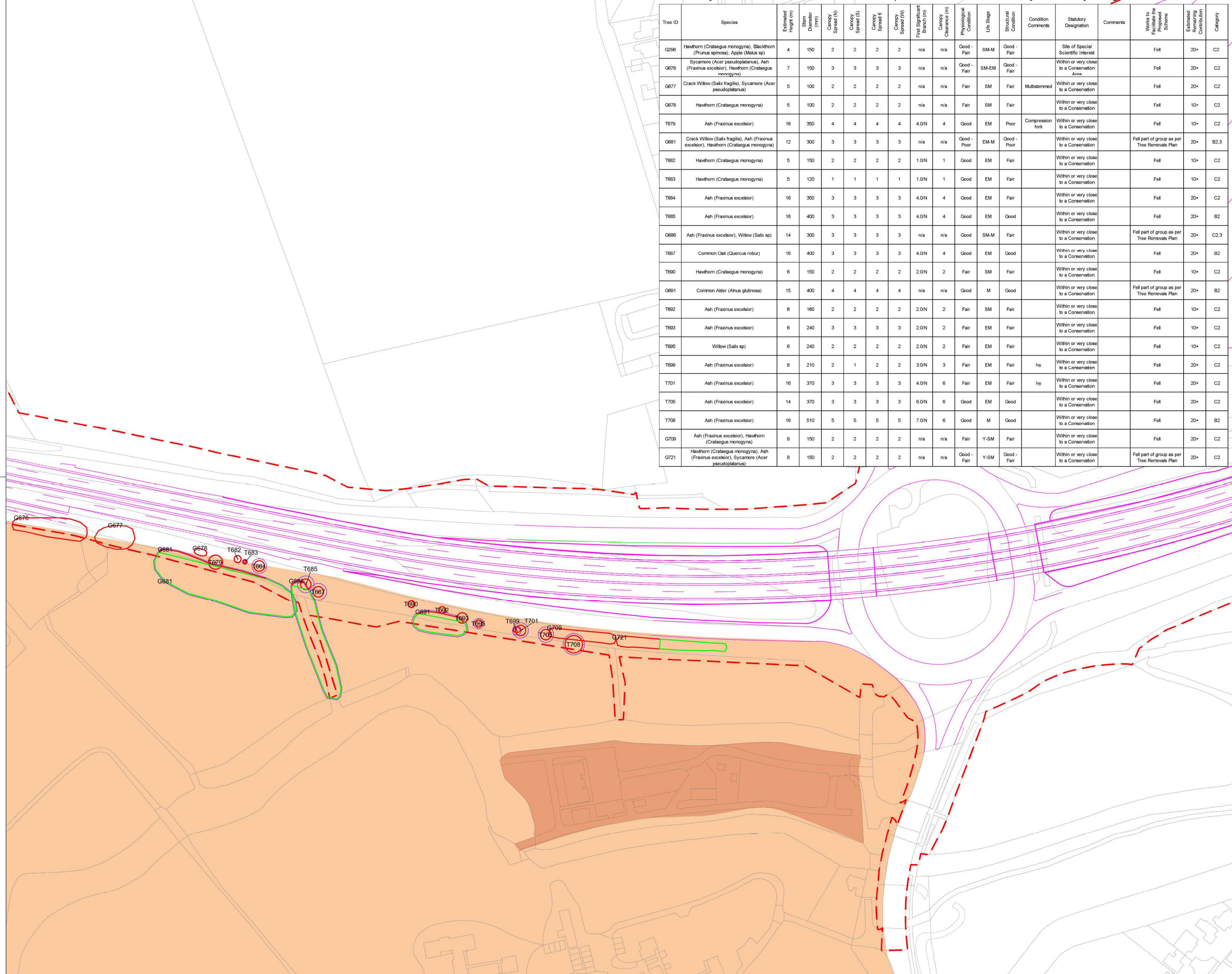
Highways England
Temple Quay House
2 Temple Quay
Bristol
BS1 6PN

AECOM + mace + WSP

Drawing Number HE551506	Originator AMW	Volume GEN	Rev 02
SCHEME WIDE Location	DR LA 104	I Type I Role I Number	

Tree Survey Schedule - Trees to be Removed or Impacted which are Protected by a Statutory Designation

Tree ID	Species	Estimated Height (m)	Stem Diameter (mm)	Canopy Spread (N)	Canopy Spread (E)	Canopy Spread (S)	Canopy Spread (W)	First Significant Branch (m)	Canopy Clearance (m)	Physiological Condition	Life Stage	Structural Condition	Condition Comments	Statutory Designation	Comments	Notes to be included in Proposed Scheme	Estimated Remaining Contribution	Category
G296	Hawthorn (Crataegus monogyna), Blackthorn (Prunus spinosa), Apple (Malus sp)	4	150	2	2	2	2	n/a	n/a	Good - Fair	SM-M	Good - Fair		Site of Special Scientific Interest		Fell	20+	C2
G676	Sycamore (Acer pseudoplatanus), Ash (Fraxinus excelsior), Hawthorn (Crataegus monogyna)	7	150	3	3	3	3	n/a	n/a	Good - Fair	SM-EM	Good - Fair		Within or very close to a Conservation Area		Fell	20+	C2
G677	Crack Willow (Salix fragilis), Sycamore (Acer pseudoplatanus)	5	100	2	2	2	2	n/a	n/a	Fair	SM	Fair	Multitemmed	Within or very close to a Conservation Area		Fell	20+	C2
G678	Hawthorn (Crataegus monogyna)	5	100	2	2	2	2	n/a	n/a	Fair	SM	Fair		Within or very close to a Conservation Area		Fell	10+	C2
T679	Ash (Fraxinus excelsior)	16	350	4	4	4	4	4.0N	4	Good	EM	Poor	Compression fork	Within or very close to a Conservation Area		Fell	10+	C2
G681	Crack Willow (Salix fragilis), Ash (Fraxinus excelsior), Hawthorn (Crataegus monogyna)	12	300	3	3	3	3	n/a	n/a	Good - Poor	EM-M	Good - Poor		Within or very close to a Conservation Area	Fell part of group as per Tree Removals Plan	20+	B2,3	
T682	Hawthorn (Crataegus monogyna)	5	150	2	2	2	2	1.0N	1	Good	EM	Fair		Within or very close to a Conservation Area		Fell	10+	C2
T683	Hawthorn (Crataegus monogyna)	5	120	1	1	1	1	1.0N	1	Good	EM	Fair		Within or very close to a Conservation Area		Fell	10+	C2
T684	Ash (Fraxinus excelsior)	16	350	3	3	3	3	4.0N	4	Good	EM	Fair		Within or very close to a Conservation Area		Fell	20+	C2
T685	Ash (Fraxinus excelsior)	16	400	3	3	3	3	4.0N	4	Good	EM	Good		Within or very close to a Conservation Area		Fell	20+	B2
G686	Ash (Fraxinus excelsior), Willow (Salix sp)	14	300	3	3	3	3	n/a	n/a	Good	SM-M	Fair		Within or very close to a Conservation Area	Fell part of group as per Tree Removals Plan	20+	C2,3	
T687	Common Oak (Quercus robur)	16	400	3	3	3	3	4.0N	4	Good	EM	Good		Within or very close to a Conservation Area		Fell	20+	B2
T690	Hawthorn (Crataegus monogyna)	6	150	2	2	2	2	2.0N	2	Fair	SM	Fair		Within or very close to a Conservation Area		Fell	10+	C2
G691	Common Alder (Alnus glutinosa)	15	400	4	4	4	4	n/a	n/a	Good	M	Good		Within or very close to a Conservation Area	Fell part of group as per Tree Removals Plan	20+	B2	
T692	Ash (Fraxinus excelsior)	6	160	2	2	2	2	2.0N	2	Fair	SM	Fair		Within or very close to a Conservation Area		Fell	10+	C2
T693	Ash (Fraxinus excelsior)	6	240	3	3	3	3	2.0N	2	Fair	EM	Fair		Within or very close to a Conservation Area		Fell	10+	C2
T695	Willow (Salix sp)	6	240	2	2	2	2	2.0N	2	Fair	EM	Fair		Within or very close to a Conservation Area		Fell	10+	C2
T699	Ash (Fraxinus excelsior)	8	210	2	1	2	2	3.0N	3	Fair	EM	Fair	Ivy	Within or very close to a Conservation Area		Fell	20+	C2
T701	Ash (Fraxinus excelsior)	16	370	3	3	3	3	4.0N	6	Fair	EM	Fair	Ivy	Within or very close to a Conservation Area		Fell	20+	C2
T705	Ash (Fraxinus excelsior)	14	370	3	3	3	3	6.0N	6	Good	EM	Good		Within or very close to a Conservation Area		Fell	20+	C2
T708	Ash (Fraxinus excelsior)	16	510	5	5	5	5	7.0N	6	Good	M	Good		Within or very close to a Conservation Area		Fell	20+	B2
G709	Ash (Fraxinus excelsior), Hawthorn (Crataegus monogyna)	8	150	2	2	2	2	n/a	n/a	Fair	Y-SM	Fair		Within or very close to a Conservation Area		Fell	20+	C2
G721	Hawthorn (Crataegus monogyna), Ash (Fraxinus excelsior), Sycamore (Acer pseudoplatanus)	8	150	2	2	2	2	n/a	n/a	Good - Fair	Y-SM	Good - Fair		Within or very close to a Conservation Area	Fell part of group as per Tree Removals Plan	20+	C2	



NOTES

- TREE CATEGORIES AS DEFINED BY BS 5837:2012
- TREE LOCATIONS ARE BASED ON BLUESKY NATIONAL TREE MAP DATA AND SITE WALKOVER.
- PLANS SHOULD BE READ IN CONJUNCTION WITH THE AECOM ARBORICULTURAL REPORT.
- THE ORIGINAL OF THIS DRAWING WAS PRODUCED IN COLOUR - A MONOCHROME COPY SHOULD NOT BE RELIED UPON.
- © Crown copyright and database rights 2018 Ordnance Survey 100030649.

KEY PLAN



KEY

- RETAINED TREES & GROUPS
- TREES & GROUPS REQUIRING REMOVAL TO FACILITATE THE WORKS
- RED LINE PLANNING BOUNDARY
- PROPOSED LAYOUT (SHOWN IN PINK)
- TREE PRESERVATION ORDER
- CONSERVATION AREA
- SSSI

© Crown copyright and database rights 2017 Ordnance Survey 100030649
 Contains Environment Agency information © Environment Agency and/or database rights 2015.
 © Wiltshire Council October 2017. Data reproduced with permission from Wiltshire Council Archaeology Service

0 10 20 30 40 50 60 70 80m
 SCALE 1:1000 @ A1

0 20 40 60 80 100 120 140 160m
 SCALE 1:2000 @ A3

Revision	Details	By	Check	Date	Suffix

Purpose of issue: **FINAL**

Client: **highways england**

Project Title: **A303 STONEHENGE AMESBURY TO BERWICK DOWN**

Drawing Title: **APPENDIX 10 / FIGURE 7A TREES TO BE REMOVED OR IMPACTED WHICH ARE PROTECTED BY A STATUTORY DESIGNATION (SHEET 2)**

Designed N/A	Drawn CC	Checked AW	Approved AK	Date 16-08-18
Internal Project No. 60547200	Scale @ A1 1:1000	Zone SW	Subsidiarity N/A	

THIS DOCUMENT HAS BEEN PREPARED PURSUANT TO AND SUBJECT TO THE TERMS OF AmW's APPOINTMENT BY ITS CLIENT. AmW ACCEPTS NO LIABILITY FOR ANY USE OF THIS DOCUMENT OTHER THAN BY ITS ORIGINAL CLIENT OR FOLLOWING AmW'S EXPRESS AGREEMENT TO SUCH USE, AND ONLY FOR THE PURPOSES FOR WHICH IT WAS PREPARED AND PROVIDED.

Highways England
 Temple Quay House
 2 Temple Quay
 Bristol
 BS1 6PN

AECOM + mace + WSP

Drawing Number HE551506	Originator AMW	Volume GEN	Rev 02
Location SCHEME WIDE	I Type DR	I Role LA	I Number 105